

Second floor & Penthouse | Segunda planta & Ático

86,85m² + 22,10m²

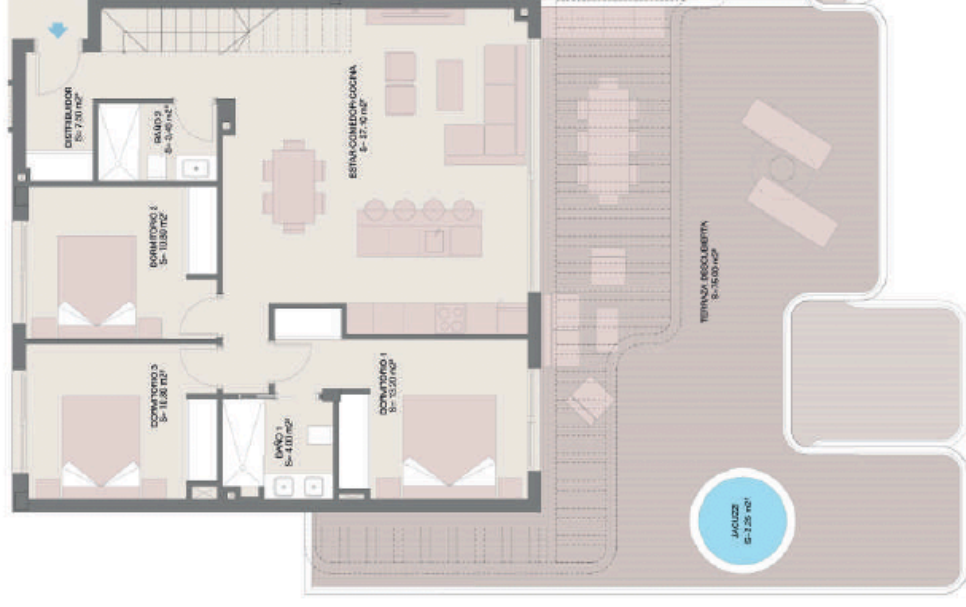
Useful surface of the apartment
Superficie útil de la vivienda

75,90m² + 64,70m²

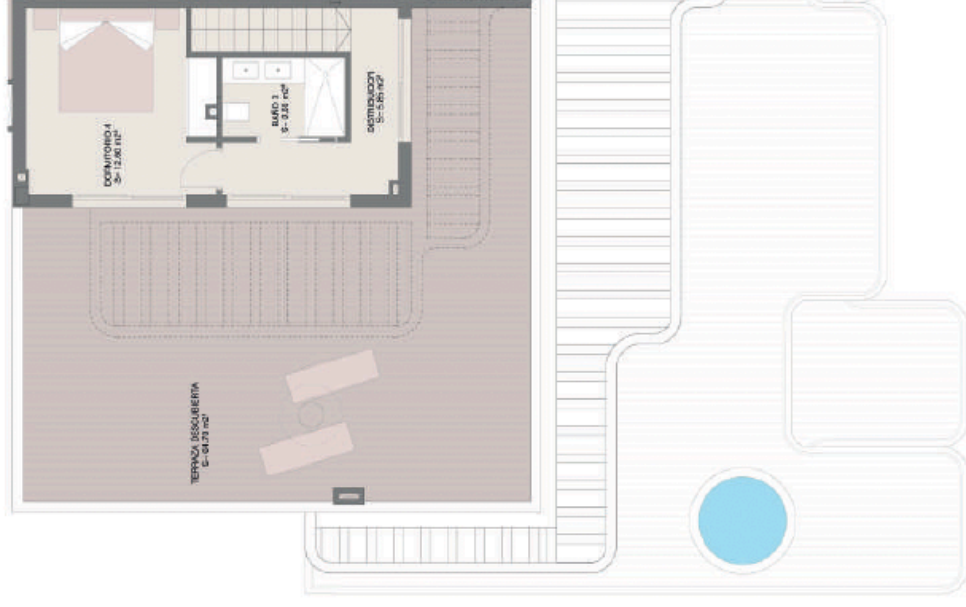
Useful surface of the terrace
Superficie útil de la terraza

98,95m² + 30,40m²

Constructed surface of the apartment
Superficie construída de la vivienda



PLANTA SEGUNDA



PLANTA ATICO