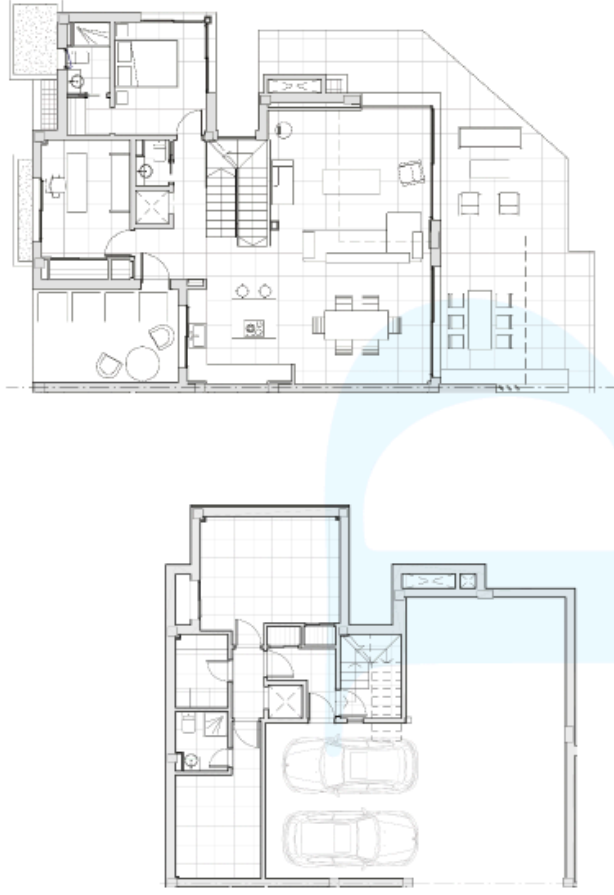


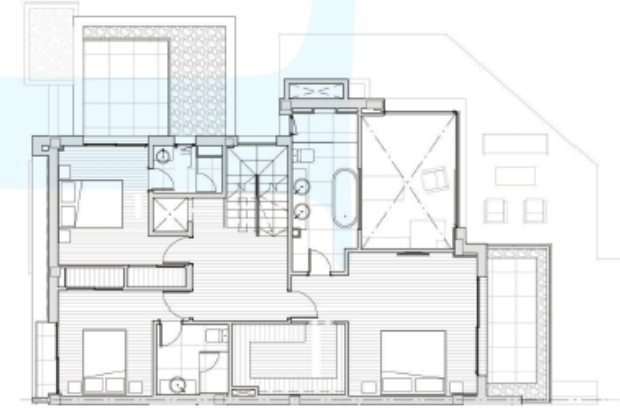
B
FLOOR PLAN

FLOORS
- HOUSE TYPE B -

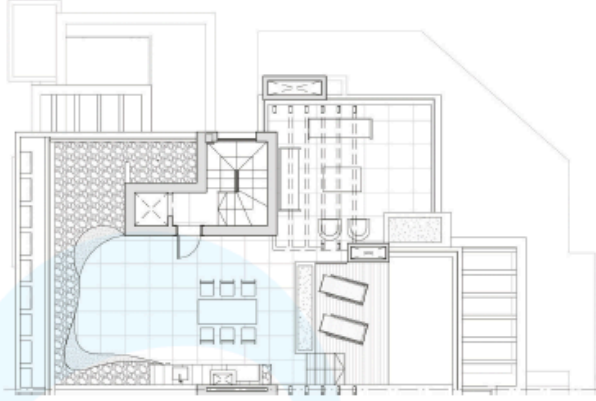


- BASEMENT -

- GROUND FLOOR -



- FIRST FLOOR -



- ROOF FLOOR -

TOTAL USEFUL AREA:
416,90 m²

TOTAL USEFUL AREA
ACCORDING TO RD 218/2005:
280,72 m²

 BUILT AREA

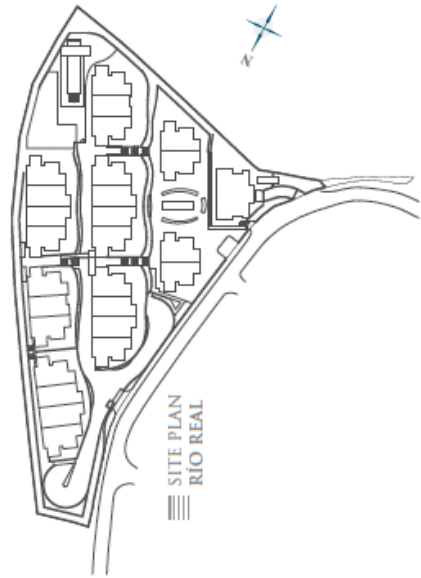
LIVING AREA 235,25 m²

TERRACES 191,95 m²

BASEMENT 80,97 m²

PRIVATE GARDEN 129,75 m²

TOTAL BUILT AREA: **508,17 m²**



 SITE PLAN
RÍO REAL

